

# User's Manual

## Content

### Product Profile

- The box contains
- Other requirements
- Protocol Support
- OS Support
- PC requirements
- Hardware Features
- Software Functions Overview
- Remote controller

### Installation Guide

- Check items before installation
- Installation

### Operation Guide

- Search program
- Record and playback
- Capture
- Time-Shifting
- EPG
- Teletext
- Available remoter
- Accounts

### Trouble Shooting

- “USB device disconnect” message
- Drop frame.
- Not able to lock channel.
- EPG inactive.
- Teletext information not found.

## 1. Product Profile

### a) The box contains

- i. USB2.0 Receiving Box
- ii. USB2.0 line
- iii. Manual
- iv. Installation CD

### b) Other requirements

- i. If the signal quality is fine, no antenna is needed
- ii. If the signal quality is bad, a simple antenna is needed

### c) Protocol Supports

- i. Compatible with DVB Standard
- ii. Supports MPEG2 Video/Audio/AC3 stream
- iii. Supports USB2.0 interface
- iv. Does not support USB1.1

### d) OS Supports

- i. Windows 2000 SP4, with DirectX 9.0c or above
- ii. Windows XP SP2, with DirectX 9.0c or above

### e) PC requirements

- i. 800MHz CPU or above
- ii. 16M Bytes Video RAM or above
- iii. 128M Bytes RAM or above
- iv. USB2.0 support

### g) Hardware Features

- i. DVB-T Box Tuner: Philips TD1316
- ii. Serial Fully compliant with ETS 300 744 & NorDig 2
- iii. Specifications for DVB-T reception
- iv. 2K & 8K COFDM Modes supported
- v. All modes supported including hierarchial modes
- vi. Fast Scan, Digital Frequency Correction and Automatic Frequency offset detection
- vii. Consolidated Pulse Killer algorithm to fight against Impulse noise
- viii. Ultra low Phase Noise, Digitally-controlled PLL Tuner
- ix. Receiving frequency coverage:
  - Low band 48.25MHz to 154.25MHz
  - Mid band 161.25MHz to 439.25MHz
  - High band 447.25MHz to 855.25MHz
- x. Band width support: 6,7 and 8 MHz

### h) Software Functions Overview

- i. Digital TV or Radio Playing

- ii. Recording and Pre-Set Recording schedule
- iii. Recording file playback
- iv. Time-Shifting
- v. Still Picture Capture
- vi. EPG
- vii. Teletext
- viii. Favorite List Support
- ix. TV mode and full screen support
- x. R/C support

g) remote controller




POWER:	close the application of dvb-t box
PLAY:	start tv program
STOP:	stop tv program
CAPTURE:	capture picture from video stream
VOL+:	volumn down
VOL-:	volumn up
MUTE:	press to temporarily cut off the sound
PROGRAM+:	browse tv program forward
PROGRAM-:	browse tv program back
TV:	switch program list be tv list
LIST:	show or hide tv program list
RADIO:	switch program list be radio list
INFO:	press for current program infomation
RECALL:	switch to previous channel
TIMESHIFT:	press one time pause the program, press two time to continue the program
FULL/WINDOW:	switch between full screen and normal window
CANCEL:	cancel input program's number
EPG:	electronic Program Guide
TELETEXT:	show TeleText content
NUMRIC:	change directly by entering number

## 2. Installation Guide

a) Check items before installation

- i. Start your computer
- iv. Connect USB Box to your PC with USB2.0 line, you can see the indicator light in the box.
- vi. Connect the signal line to USB Box.

b) Installing

- i. Load the installation CD, and you will see the “InsTv187.exe” on CD:
- ii. Double click “InsTv187.exe”
- iii. Please follow the wizard and finish all the steps
- iv. After installing, you can see the icon “” on desktop.

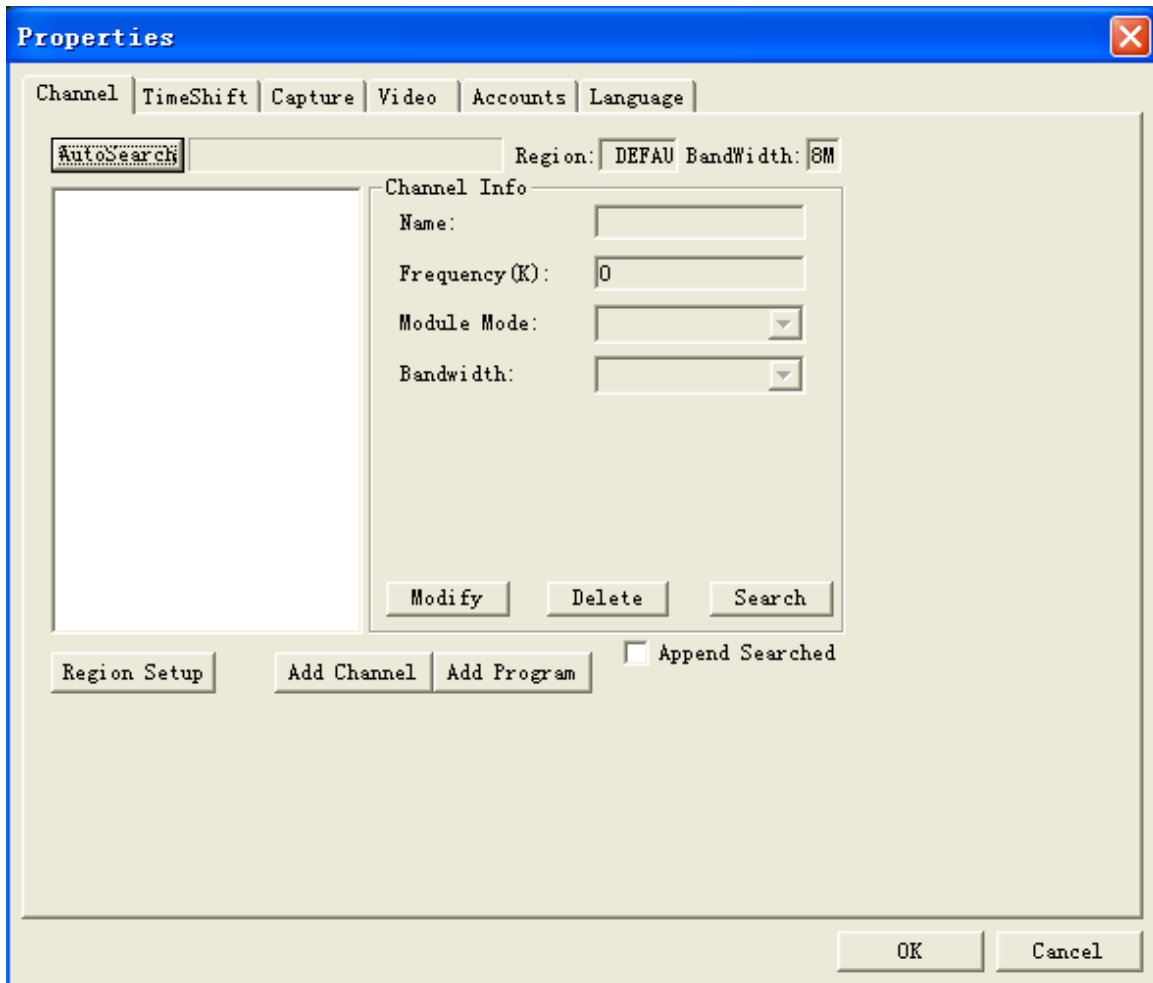
### 3. Operation Guide

a) Search program

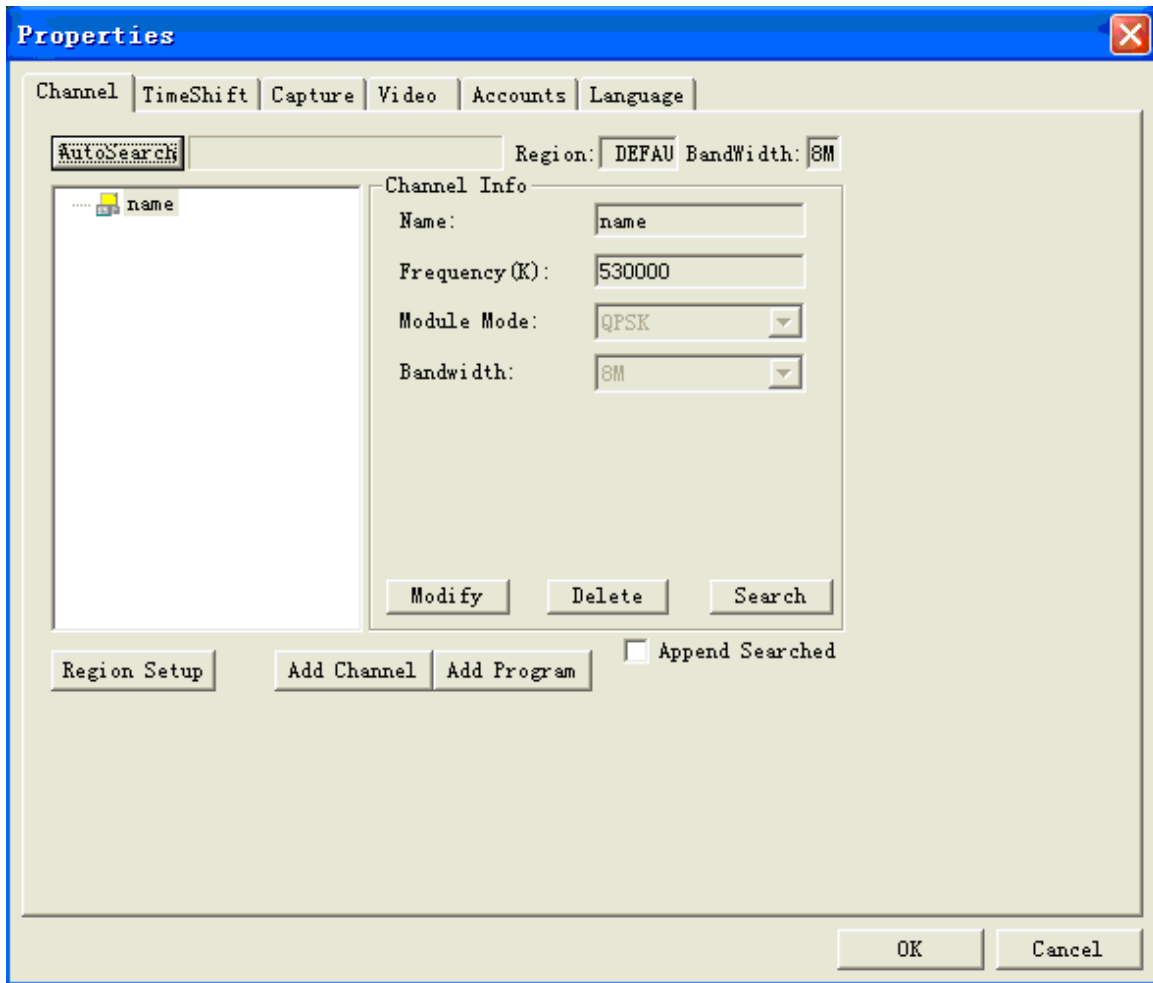
- i. Double click the icon  on desktop. the main panel will pop up as follows:




- ii. Click the button , the “properties” dialog box will popup as follows:



- iii. Click the button “Add Channel”, you can find a textbox which can be edited. fill your favorite name in “name” subject, and write down the frequency of –T at your place in “Frequency” subject, for example, if the frequency is 530000KHz,pls fill “530000” in the subject. then you have to choose the mode in “Module Mode” subject, such as QPSK; and choose the Band Width such as 8M according to the following picture:

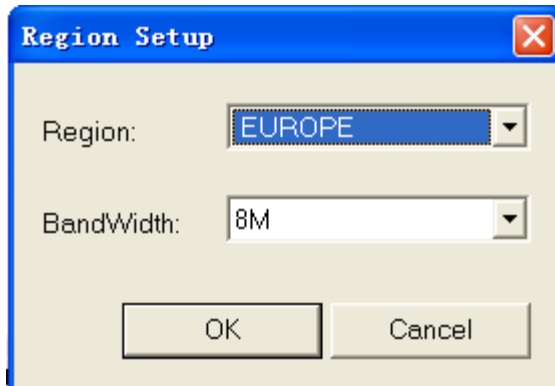


iv. When you finished, you can click “save” button to save it, and click “Search” to start to search programs. the name of program which have been found will be listed at list

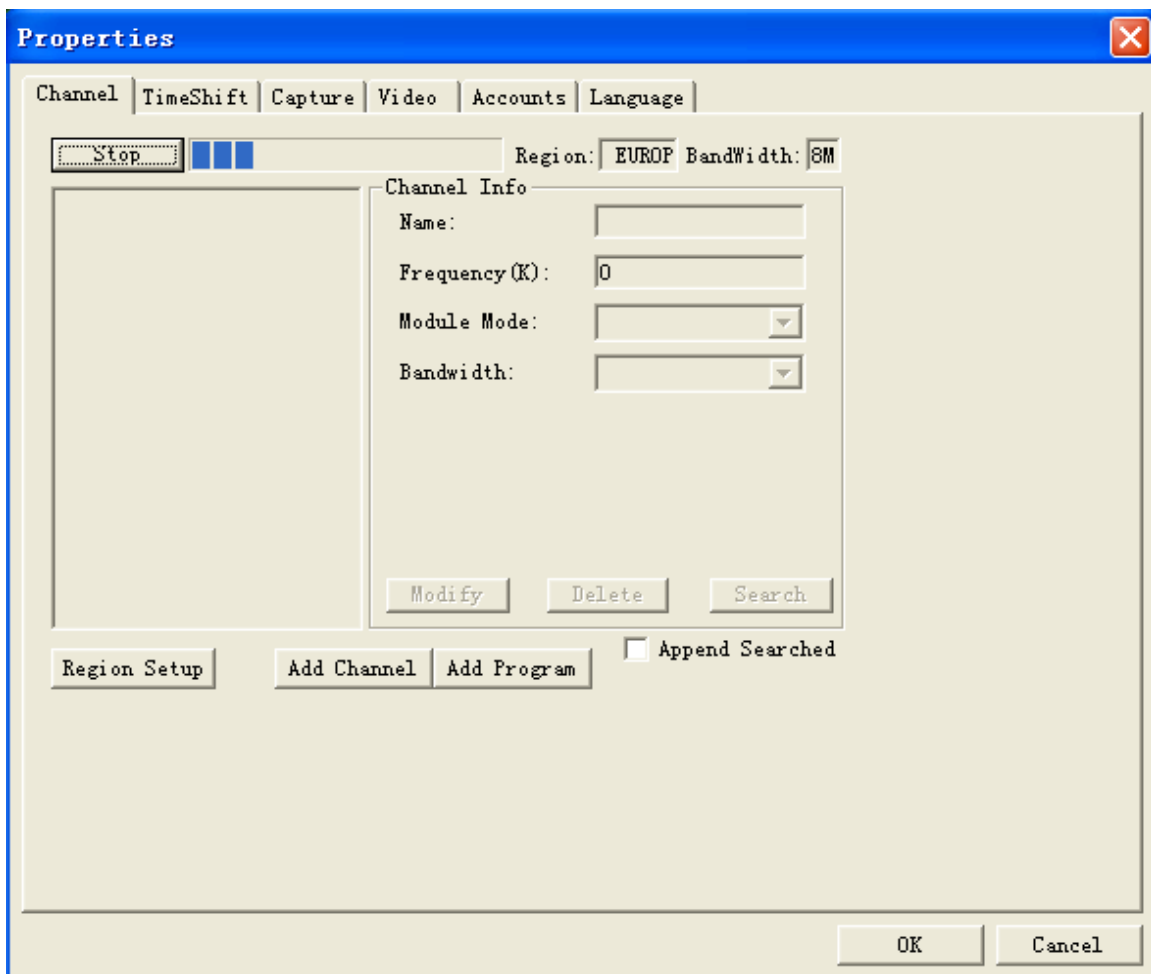
box on the left, then click “OK” button to watch. Click  button to list

the programs, and click  to choose.

v. If you don't know the accurate frequency and bandwidth, you can use the function of “AutoSearch”. pls click the button of “Region Setup”, you can find the following dialog box..




- vi. select the place name in the “ Region ” subject,if you are in Europe,pls select “ EUROPE ” , and click “ OK ” button to comfirm,then click “ AutoSearch ” button ,to search the progress bar as follows:

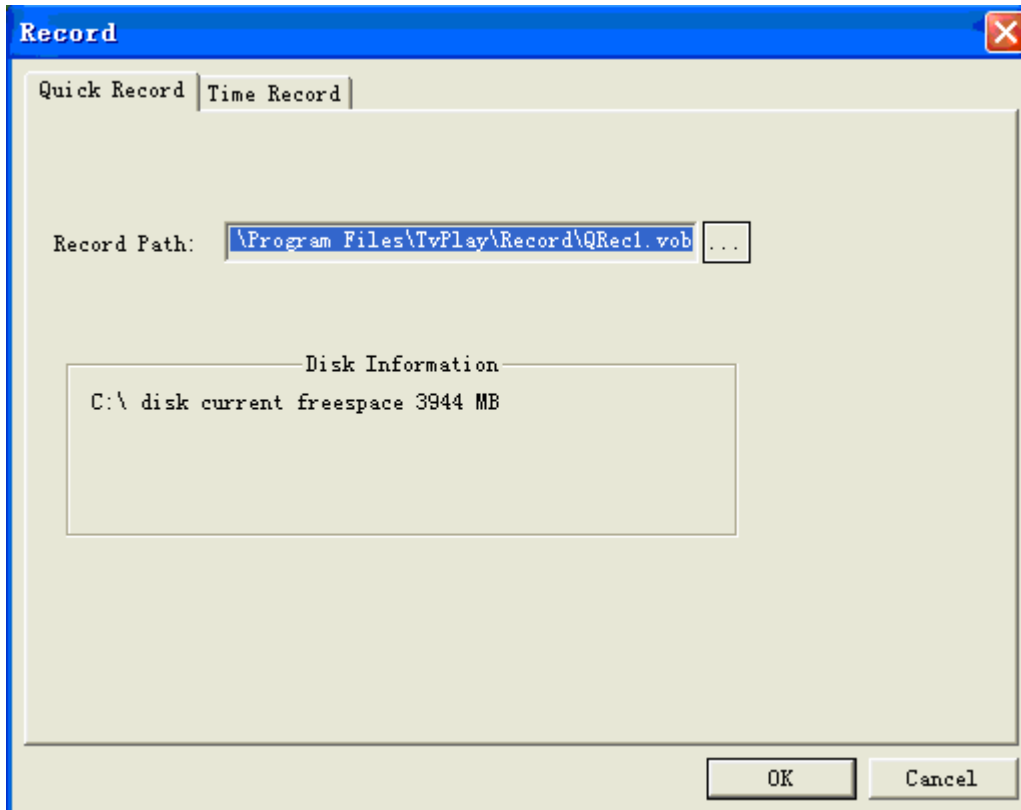




the programs have be found will be listed in the list box on the left.

b) Record and playback

i. when the program is playing,click  button

ii. You can see the window as follow




iii. Click  button to choose the the record path and press “OK”button to start to record,if you want to stop recording,pls click  button.

iv. If you want to play the program which you have record just now, you can choose “switch to playback” with single click the right key of the mouse as following picture.






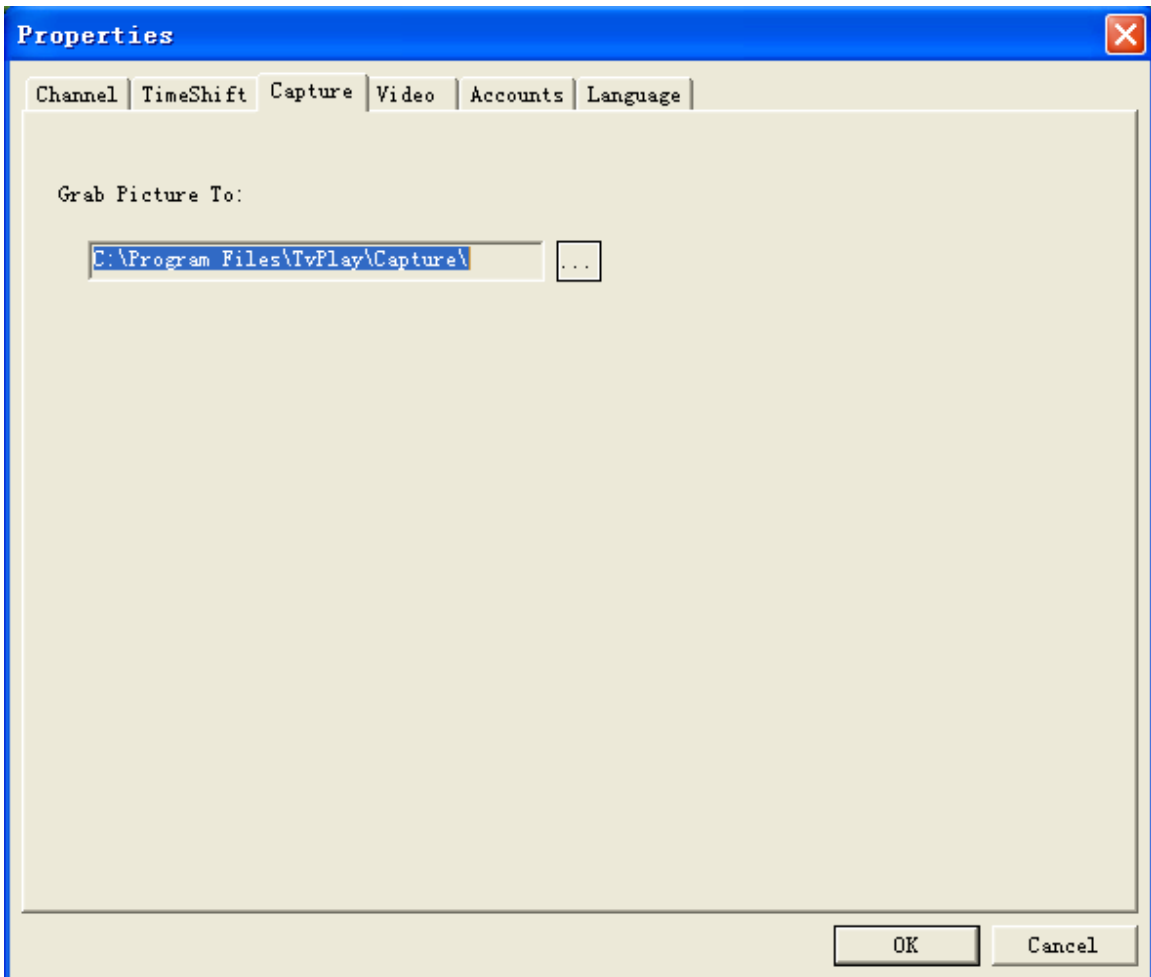
v. Then you can see the window as following picture.







- vi. Click  button to choose the file you want to play, and you can watch programs you record.

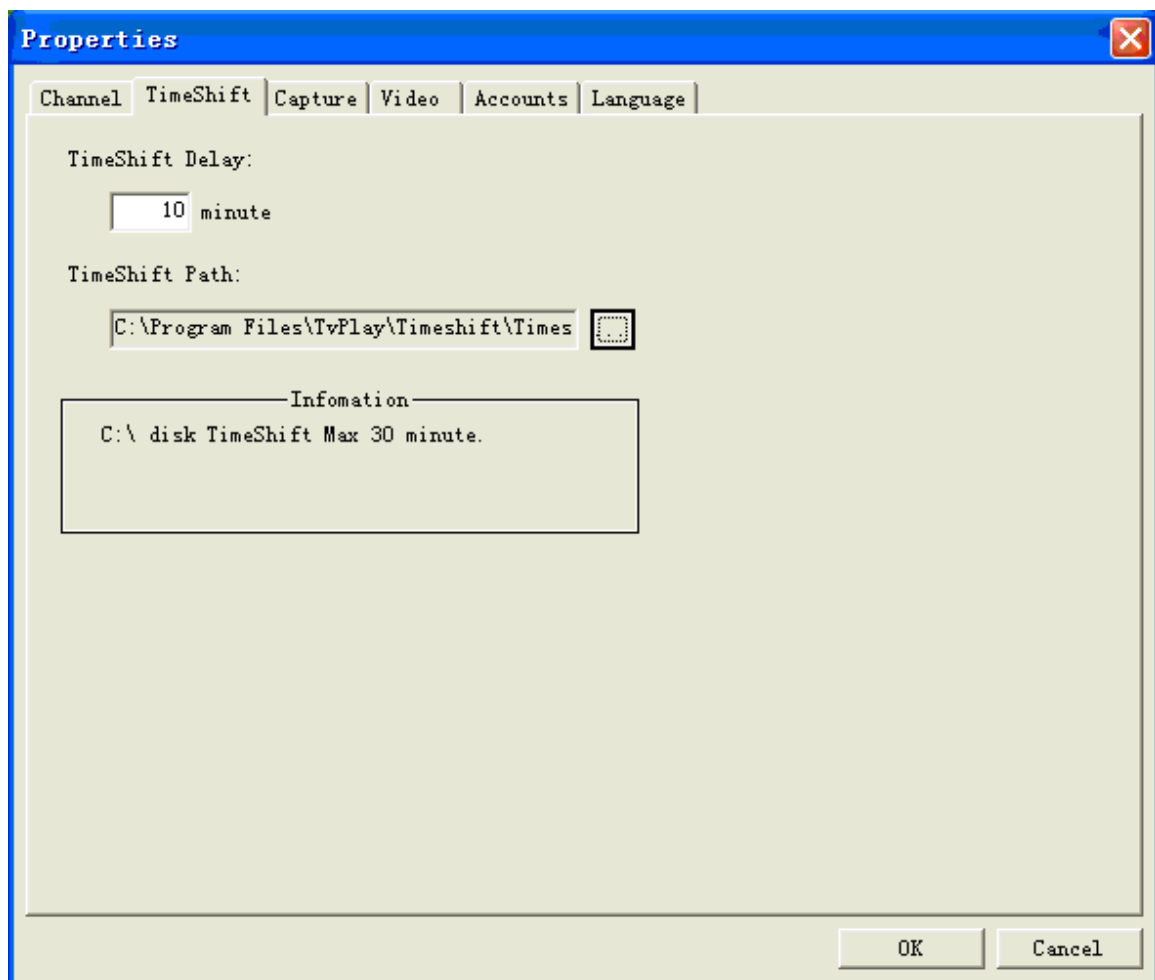
c) Capture

- i. When the program is playing, click  to capture pictures you like, and the picture will be saved at ..\tvplay\capture acquiescently
- ii. if you want to change the save path of pictures. click , the “properties” dialog box will popup, then choose “ capture ” and click  button as following picture.



c) Time Shift

- i. if you have to leave for a moment when you are watching programs, but you don't want to miss it, the function of Timeshift can help you. the operation is very simple, you can press  button before your leaving, and click  when you come back to watch programs continuously. but pay attention that the time must be not longer than 30 minutes.
- ii. Timeshift files will be saved at `..\tvplay\timeshift` acquiescently, if you want to change save path, click , the "properties" dialog box will popup, then choose "Timeshift" and click  button as following picture:



d) EPG

- i. If current program include EPG information,when you are watching,click



button to see the information.

e) Teletext

- i. If current program include Teletext information,when you are watching,click



button to see the Teletext.

f) available remoter

- i. each remoter in the market can operate USB box, but you must adapt the remoter at first: you can find a application named IrTest.exe in the contents of TvPlay, and Double click the left key of mouse to open it.
- ii. Press any key in the remoter, the key code will be showed in the “ Trigger IR Code ” textbox ,for example, you press the key of volume up, the key code will be showed “ 0x8f7c03f ” ,then you can copy it to the “ volume + ” textbox as following picture;

**IR Test** [Min] [Max] [Close]

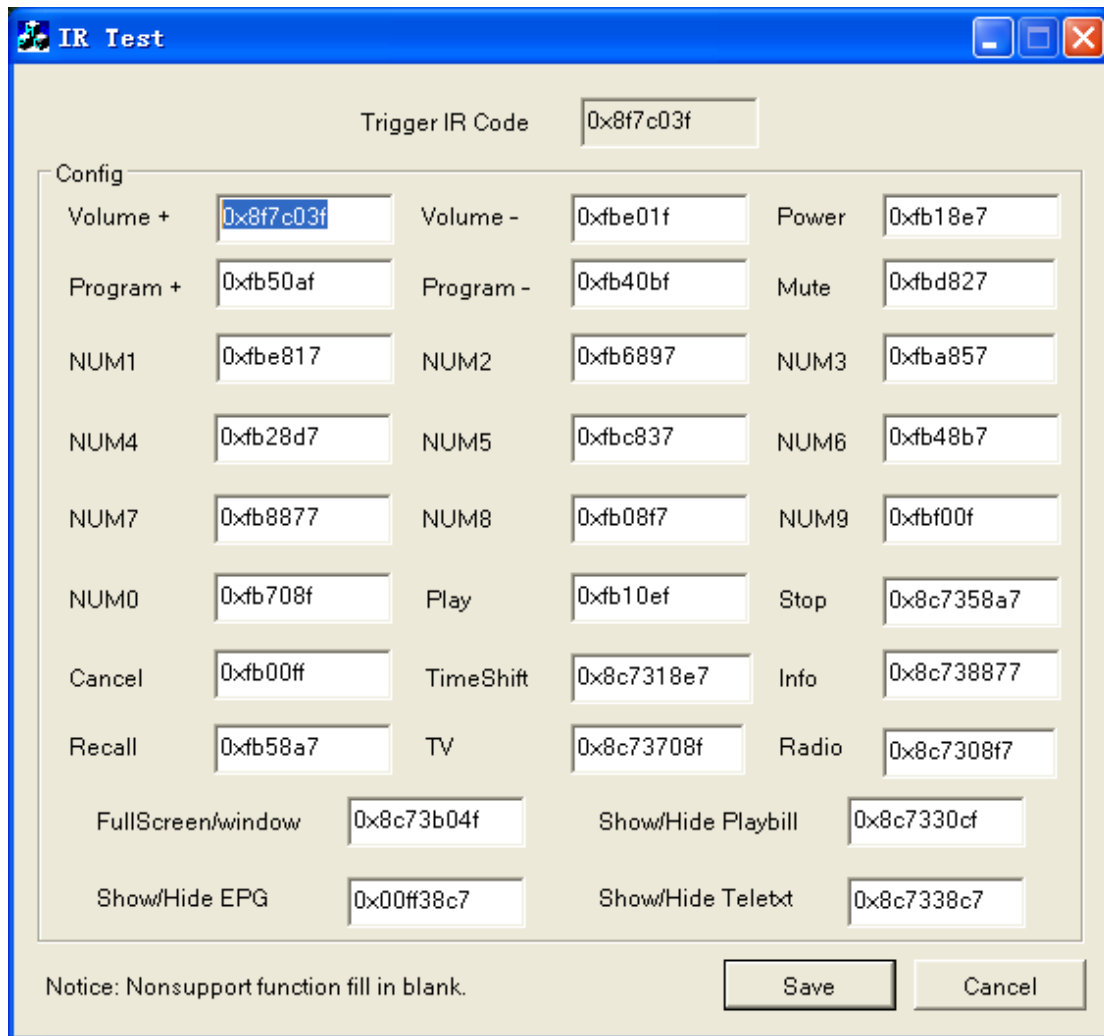
Trigger IR Code:

Config

Volume +	<input type="text" value="0xfba05f"/>	Volume -	<input type="text" value="0xfbe01f"/>	Power	<input type="text" value="0xfb18e7"/>
Program +	<input type="text" value="0xfb50af"/>	Program -	<input type="text" value="0xb40bf"/>	Mute	<input type="text" value="0xbd827"/>
NUM1	<input type="text" value="0xfe817"/>	NUM2	<input type="text" value="0xb6897"/>	NUM3	<input type="text" value="0xba857"/>
NUM4	<input type="text" value="0xb28d7"/>	NUM5	<input type="text" value="0xbc837"/>	NUM6	<input type="text" value="0xb48b7"/>
NUM7	<input type="text" value="0xb8877"/>	NUM8	<input type="text" value="0xb08f7"/>	NUM9	<input type="text" value="0xbf00f"/>
NUM0	<input type="text" value="0xb708f"/>	Play	<input type="text" value="0xb10ef"/>	Stop	<input type="text" value="0x8c7358a7"/>
Cancel	<input type="text" value="0xb00ff"/>	TimeShift	<input type="text" value="0x8c7318e7"/>	Info	<input type="text" value="0x8c738877"/>
Recall	<input type="text" value="0xb58a7"/>	TV	<input type="text" value="0x8c73708f"/>	Radio	<input type="text" value="0x8c7308f7"/>
FullScreen/window	<input type="text" value="0x8c73b04f"/>	Show/Hide Playbill	<input type="text" value="0x8c7330cf"/>		
Show/Hide EPG	<input type="text" value="0x00ff38c7"/>	Show/Hide Teletxt	<input type="text" value="0x8c7338c7"/>		

Notice: Nonsupport function fill in blank.

[Save] [Cancel]




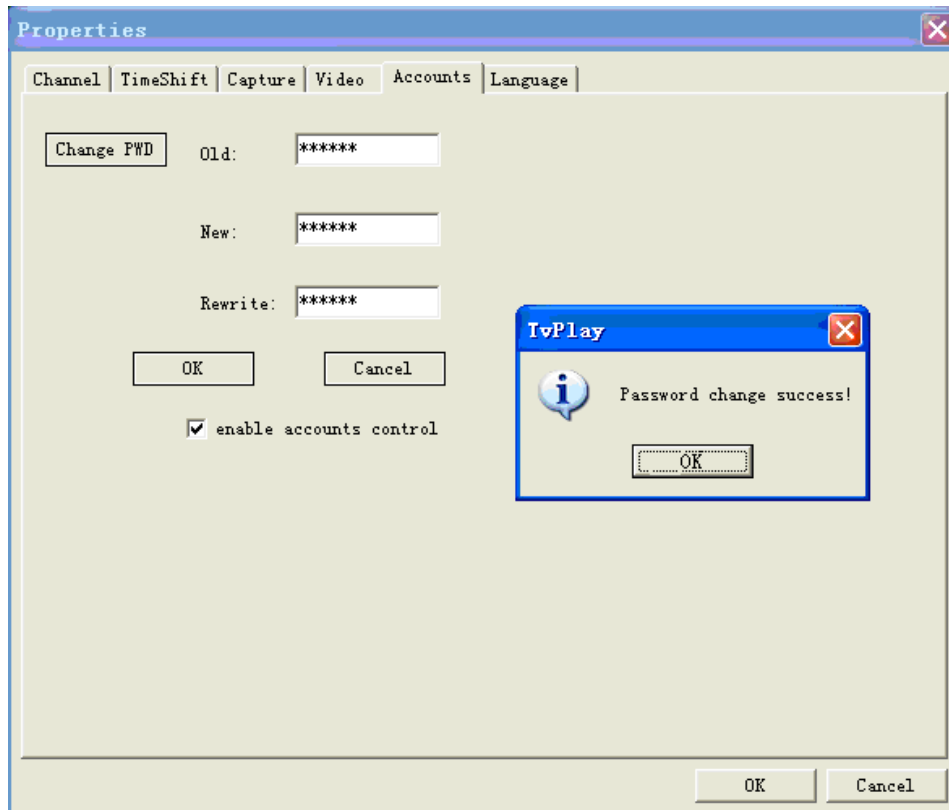
iii. When you finished all key on your remoter, pls click the “Save” button and restart the TvPlay application, you can start to use your new remoter.

g) Accounts

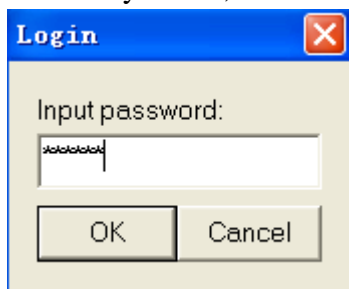
i. If you want to lock some programs to stop others to watch it, you can use the funtion of accounts, when you are watching TV, you can click the right key to choose “ lock ” at the the name of program, and this program will be locked. but how to stop other people to watch the locked programs.



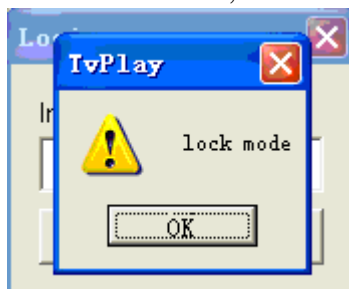
ii. click , the “properties” dialog box will popup, then choose “ Accounts ” and click “ Change PWD ” button , insert your old password in the “Old” text box, the default value is “ 123456 ” , then input your new password, and input it in the “ Rewrite ”text box again, click the “OK” button to confirm .select “ enable accounts control ” check box as following picture:



- iii. when you see “ Password change success! ” , pls click “OK” button, then restart the “ TvPlay.exe ” ,the following window will popup.



- iv. If you want to watch the locked programs, you can input the password and click“OK” button. for someone without password, click “Cancel” button and come into lock mode, in this mode, you can not watch the locked programs.



## 4. Trouble Shooting

a) “USB device disconnect” message



- i. No power supplies the DVB-T USB2.0 Box. Please check connection between box and PC.
- ii. USB2.0 Host Device Driver missed. Please install the latest driver for the USB2.0 host controller
- iii . Re-power on the USB Box. Re-connect to PC for DVB-T USB2.0 Box.

b) Drop frame.

- i. please use a better antenna for receiving.
- ii. The VGA card performance is not good for playing. Please check the settings for VGA card, try to improve the performance.

c) Not able to lock channel.

- i. No signal at all.
- ii. The parameters for this channel are incorrect.
- iii. aerial is disconnected/damaged/misaligned, please check aerial .
- iv. out of digital signal area,please check with dealer.
- v. Try to scan all the channels.

d) EPG inactive.

- i. This is a channel without EPG information.

e) Teletext information not found.

- i. No information transferred by this channel.