

User's Manual

Content

Product Profile	2
Accessories	2
Other requirements	2
Protocol Support	2
OS Support	2
PC requirements	2
Hardware Features	2
Software Functions Overview	2
Remote Control	3
Installation Guide	
Check items before installation	3
Installation	3
Operation Guide	
Search program	3-5
Record and playback	5-6
Capture	7
Time-Shifting	7
EPG	7
Teletext	7
Available remoter	8
Accounts	8-9
Trouble Shooting	
“USB device disconnect” message	9
Drop frame	9
Not able to lock channel	9
EPG inactive	9
Teletext information not found	9

Product Profile

a) Accessories

- i. USB2.0 Receiving Box
- ii. USB2.0 line
- iii. Installation CD
- iv. Remote control

b) Other requirements

- i. If the signal quality is fine, no antenna is needed
- ii. If the signal quality is bad, a simple antenna is needed

c) Protocol Supports

- i. Compatible with DVB Standard
- ii. Supports MPEG2 Video/Audio/AC3 stream
- iii. Supports USB2.0 interface
- iv. Does not support USB1.1

d) OS Supports

- i. Windows 2000 SP4, with DirectX9.0c or above
- ii. Windows XP SP, with DirectX 9.0c or above

e) PC requirements

- i. 800MHz CPU or above
- ii. 16M Bytes Video RAM or above
- iii. 128M Bytes RAM or above
- iv. USB2.0 support

f) Hardware Features

- i. DVB-T Box Tuner: Philips TD1311
- ii. Serial Fully compliant with ETS 300 744&NorDig 2
- iii. Specifications for DVB-T reception
- iv. 2K&8K COFDM Modes supported
- v. All modes supported including hierarchical modes
- vi. Fast Scan, Digital Frequency Correction and Automatic Frequency offset detection
- vii. Consolidated Pulse Killer algorithm to fight against Impulse noise
- viii. Ultra low Phase Noise, Digitally-controlled PLL Tuner
- ix. Receiving frequency coverage:
 - Mid band 161.25MHz to 439.25MHz
 - High band 447.25MHz to 855.25MHz
- x. Band width support: 6, 7 and 8 MHz

g) Software Functions Overview

- i. Digital TV or Radio Playing
- ii. Recording and Pre-set Recording schedule
- iii. Recording file playback
- iv. Time-Shifting
- v. Still Picture Capture
- vi. EPG
- vii. Teletext
- viii. Favorite List Support


- ix. TV mode and full screen support
- x. R/C support

Remote Controller




- POWER:** To switch the receiver in and out of standby mode.
- MUTE:** To cut off the sound temporarily
- PLAY:** To start TV or Radio program
- STOP:** TO stop TV or Radio program
- FREEZE:** Pause/Play A/V
- CAPTURE:** To capture picture from video stream
- VOL+:** Volumn up
- VOL-:** Volumn down
- PROGRAM+:** To browse TV or Radio program forward
- PROGRAM-:** To browse TV or Radio program back
- TV/R:** To switch program between TV and Radio list
- OK:** To show or hide TV program list
- INFO:** To display current program information
- RECALL:** Switch to previous channel
- TIMESHIFT:** Press one time pause the program, press two times to continue the program
- FULL/WINDOW:** To switch between full screen and normal window
- EXIT:** To cancel input program's number
- GUIDE:** Electronic Program Guide
- NUMRIC:** To change channel directly by entering number
- AUDIO:** To change the audio mode in left, right, stereo

Installation Guide

- a) Check items before installation
 - i. Start your computer
 - ii. Connect USB Box to your PC with USB2.0 line, you can see the indicator light in the box.
 - iii. Connect the signal line to USB Box.
- b). Installing
 - i. Load the installation CD, and you will see the "Driver.exe" on CD:
 - ii. Double click "Driver.exe"
 - iii. Please follow the wizard and finish all the steps
 - iv. After installing, you can see the icon  on desktop.

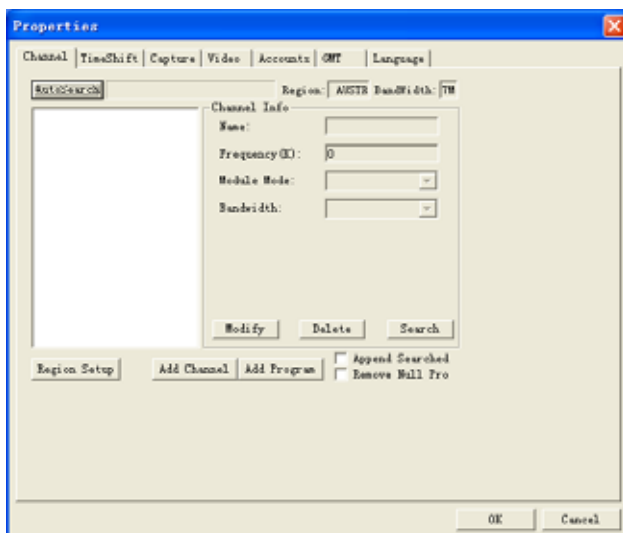
Operation Guide

- a) Searching program
 - i. Double click the icon  on desktop.

The main panel will pop up as follows:





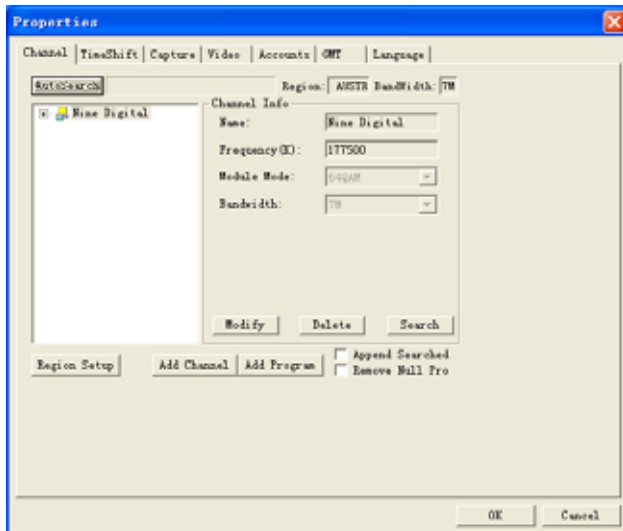
ii. Click the button , the “properties” dialog box will pop up as follows:



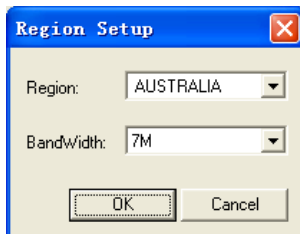
iii. Click the button “Add Channel”, you can find a text box which can be edited. Fill your favorite name in “name” subject, and write down the frequency of T at your place in “Frequency” subject, for example, if the frequency is 530000KHz, please fill “530000” in the subject. Then you have to choose the mode in “Module Mode” subject, such as QPSK; and choose the Band Width such as 8M according to the following picture:

iv. When you finished, you can click “save” button to save it, and click “Search” to start to search program . The name of program which has been found will be listed at list box on the left, then

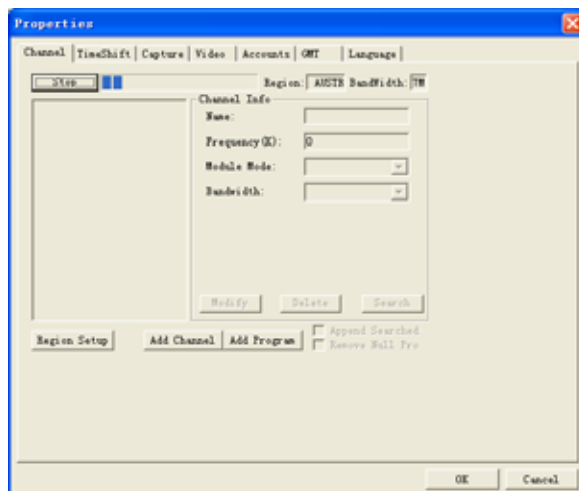
click “OK” button to watch. Click  button to list the programs, and click  to choose.



v. If you don't know the accurate frequency and bandwidth, you can use the function of "AutoSearch". Click the button of "Region Setup", you can find the following dialog box.



vi. Select the place name in the "Region" subject, if you are in Europe, please select "EUROPE", and click "OK" button to confirm, then click "AutoSearch" button, to search the progress bar as follows:

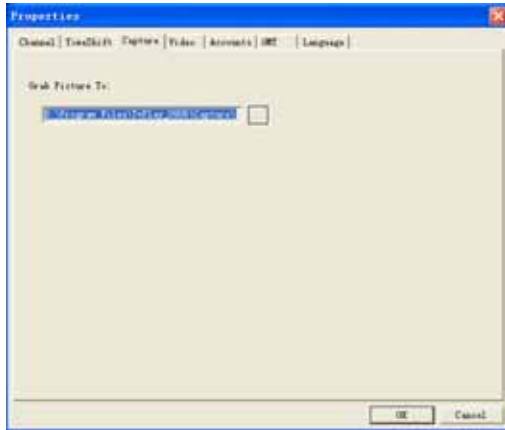




The programs have been found will be listed in the list box on the left.

b) Record and playback

i. When the program is playing, click  button

ii. You can see the window as follow




- iii. Click  button to choose the record path and press “OK” button to start to record, if you want to stop recording, please click  button.
- iv. If you want to play the program which you have record just now, you can choose “switch playback” with single click the right key of the mouse as following picture.






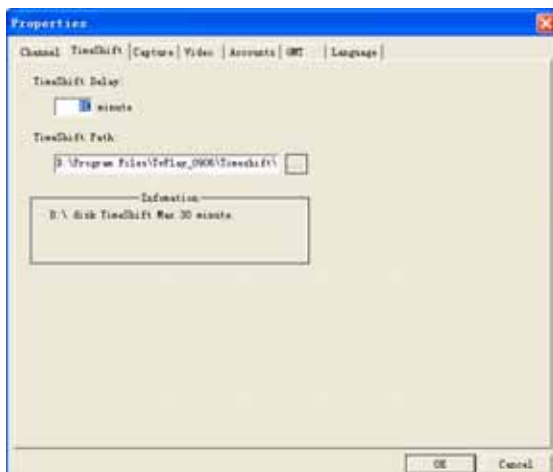
- v. Then you can see the window as following picture.






- vi. Click  button to choose the file you want to play, and you can watch programs you record.

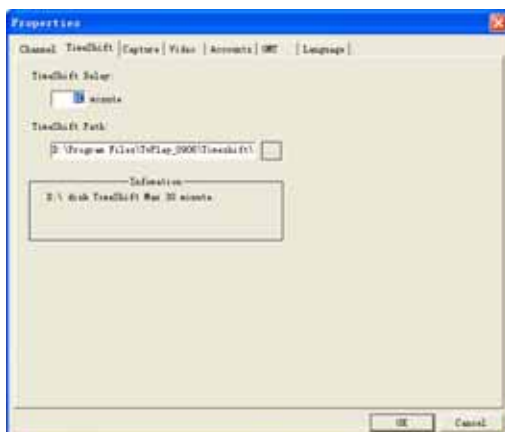
c) Capture

- i. When the program is playing, click  to capture pictures you like, and the picture will be saved at..\tvplay\capture acquiescently.
- ii. If you want to change the save path of pictures. Click , the “properties” dialog box will pop up, then choose “capture” and click  button as following picture.




d) Time Shift


- i. If you have to leave for a moment when you are watching program, but you don't want to miss it, the function of Timeshift can help you . The operation is very simple, you can press  button before your leaving, and click when you come back to watch programs continuously. but pay attention that the time must be not longer than 30 minutes.
- ii. Timeshift files will be saved at..\tvplay\timeshift acquiescently, if you want to change save path, click , the “properties” dialog box will popup, then choose “timeshift” and click  button as following picture:



e) EPG

- i. If current program include EPG information, when you are watching , click  button to see the information.

f) Teletext

- i. If current program include teletext information, when you are watching , click  button to see the teletext.

g) Available Remoter

i. Each remoter in the market can operate USB box , but you must adapt the remoter at first: you can find a application named IrTest.exe in the contents of TvPlay, and double click the left key of mouse to open it.


ii. Pressing any key in remoter , the key code will be showed in the “Trigger IR Code” textbox, for example, you press the key of volume up, the key code will be showed “0x8f7c03f”, then you can copy it to the “volume+” textbox as following picture;

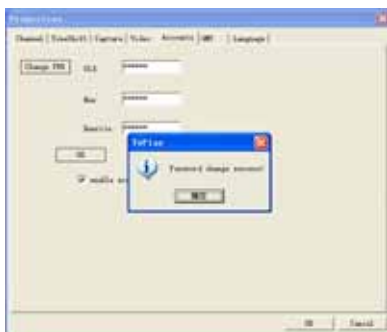


iii. When you finished all key on your remoter, please click the “Save” button and restart the TvPlay application, you can start to use your new remoter.

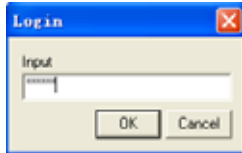
h) Accounts

i. If you want to lock some programs to stop others to watch it, you can use the function of accounts, when you are watching TV , you can click the right key to choose “lock” at the name of program, and this program will be locked . But how to stop other people to watch the locked programs.

ii. Click  , the “properties” dialog box will pop up, then choose “Accounts” and click “Change PWD” button , insert your old password in the “old” text box, the default value is “123456” , the input your new password , and input it in the “Rewrite” text box again , click the “OK” button to confirm. Select “enable accounts control” check box as following picture:



iii. When you see “Password change successfully!”, please click “OK” button, then restart the “TvPlay.exe”, the following window will pop up.



iv. If you want to watch the locked programs, you can input the password and click “OK” button. For someone without password, click “Cancel” button and come into lock mode, you can not watch the locked programs.



4. Trouble Shooting

- a) “USB device disconnect” message
 - i. No power supplies the DVB-T USB2.0Box. please check connection between box and PC.
 - ii. USB2.0 Host device driver missed. Please install the latest driver for the USB2.0 host controller
 - iii. Re-power on the USB Box. Reconnect to PC for DVB-T USB2.0 Box.



- b) Drop frame
 - i. Please use a better antenna for receiving.
 - ii. The VGA card performance is not good for playing. Please check the setting for VGA card, try to improve the performance.
- c) Can not lock channel.
 - i. No signal at all.
 - ii. The parameters for this channel are incorrect.
 - iii. Aerial is disconnected/damaged/misaligned, please check aerial.
 - iv. Out of digital signal area, please check with dealer.
 - v. Try to scan all the channels.
- d) EPG inactive.
 - i. This is a channel without EPG information.
- e) Teletext information not found.
 - i. No information transferred by this channel.